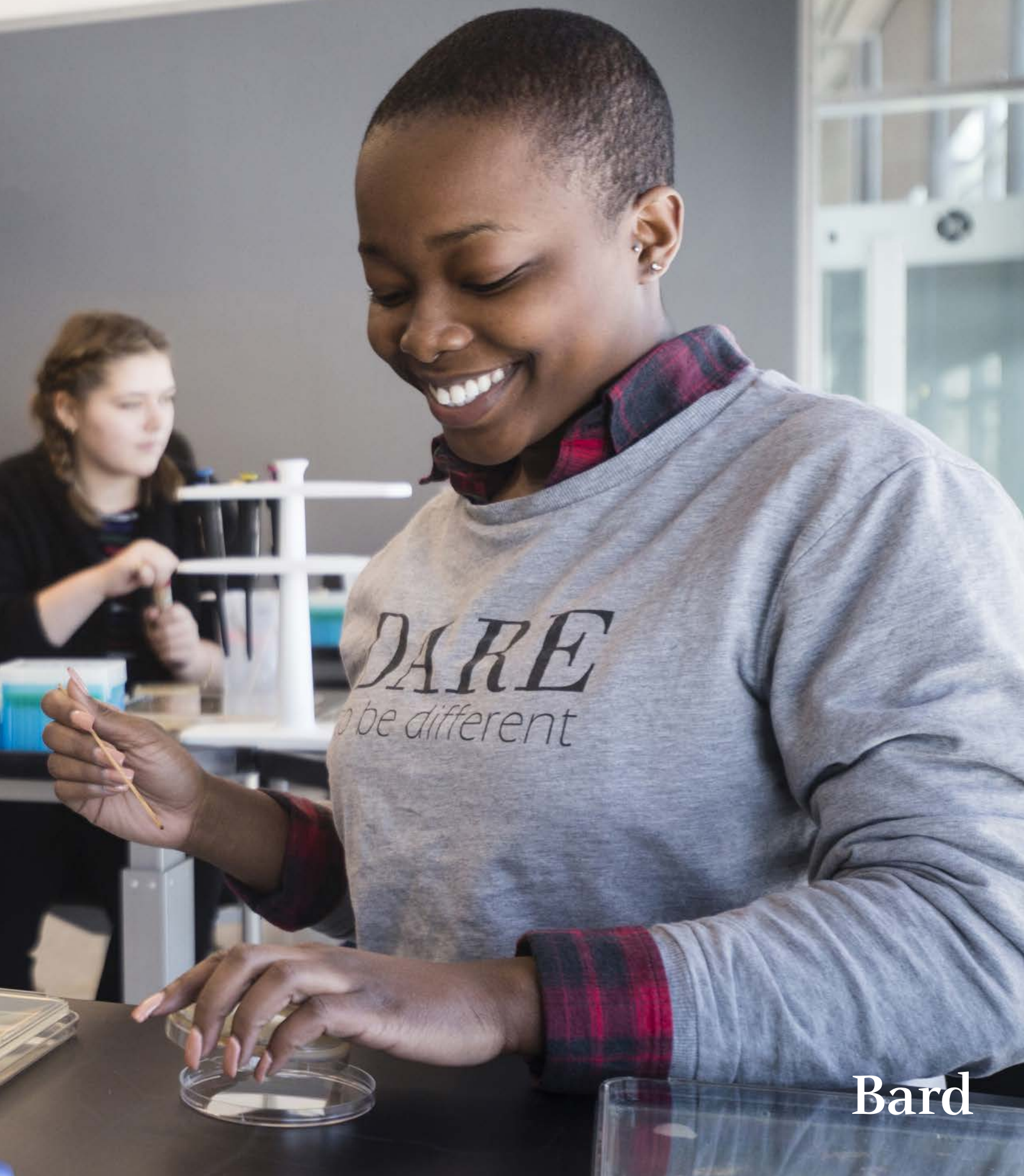


# EDUCATION



Bard

A photograph of two students in a laboratory setting. The student on the left is wearing safety goggles and a green shirt, pointing towards a piece of equipment. The student on the right is also wearing safety goggles and a grey shirt, holding a small white card. The background shows various lab equipment and a bright light fixture.

# COMMON CURRICULUM

Bard students are held to the highest possible standard of intellectual achievement. They are challenged and encouraged to take risks. The enthusiasm, hard work, and high level of engagement with which they obtain their education stand them in excellent stead for the rest of their lives.

Academic guidance begins from the student's first days at Bard. An academic adviser meets with the student at strategic points in every semester to discuss classes, majors, and curricular requirements.

## FIVE TRADITIONS

### Language and Thinking Program

First-year students arrive in August to immerse themselves in this intensive introduction to the liberal arts and sciences. They spend three weeks reading extensively in several genres, concentrating on different writing projects. Working in small groups and in individual conferences with faculty, students learn to read and listen thoughtfully, articulate ideas clearly, and review their work critically.

### First-Year Seminar

This two-semester course presents intellectual, cultural, and artistic ideas in historical context, through extraordinary works of literature, philosophy, politics, religion, science, and the arts. Class discussions and frequent writing assignments develop precise, analytical thinking. Core texts address a theme for the year, with each semester concentrating on different authors and modes of thought. In the fall semester, students consider "what is political freedom?" In the spring, they focus on "what is personal freedom?"

### Citizen Science

The Citizen Science program encourages students to develop personal science literacy through hands-on course work and projects. In combination with core classes, students choose from four lab strands through which to explore this year's topic: water. The four strands are: research, community action, science education, and science communication. Each strand approaches the topic of water and science literacy skills from a different angle, capturing the interests of students from every field.

### Moderation

Through Moderation, Bard students declare a major and move into the Upper College. Sophomores write two Moderation papers: one that assesses their academic performance and experience during their first two years, and one that identifies goals and a study plan for the next two. Students discuss these papers with a review board of faculty members—an unusual and valuable experience at this level.

### Senior Project

The capstone of the Bard education is the Senior Project, an original, focused work that reflects a student's cumulative academic experience. Students have great flexibility in choosing the form of their project. A science major might design an experiment or analyze published findings. A social studies major might report on fieldwork. An arts major might create a portfolio, composition, or performance. Research is guided through weekly one-on-one meetings with a Senior Project adviser. Preparation begins in the junior year, when students pursue tutorials and seminars directed toward selecting a Senior Project topic.

# ACADEMICS

Bard students choose from among 36 stand-alone programs and 12 concentrations in four academic divisions and interdivisional programs. Students may major in more than one program. Joint majors offer students an opportunity to work on projects that cut across disciplines, while double majors allow students to focus on more than one subject, culminating in two Senior Projects.

## DIVISION OF THE ARTS

Art History, Dance, Film and Electronic Arts, Music, Photography, Studio Arts, Theater and Performance

Arts students study and work with active, distinguished professionals. The campus has a vibrant atmosphere, in part because of Bard's proximity to New York City, one of the world's great arts centers. Students study with members of the American Dance Festival, filmmaker Kelly Reichardt, dramaturg Gideon Lester, playwright Chiori Miyagawa, multimedia artist Judy Pfaff, or photographers Stephen Shore, An-My Lê, and Tim Davis '91, just some of those who bring passion for their art to the classroom.

All of the arts programs unite a study of craft with history, theory, and criticism; theoretical understanding and practical skills are developed through production and performance. Students develop aesthetic criteria that they can apply to other areas of learning. Moderation and the Senior Project are particularly valuable opportunities for the aspiring artist to present a substantial body of work for display or performance. Tutorials, conferences with advisers, and independent work prepare students for the Senior Project, which may be a critical monograph, collection of photographs, exhibition of original works, performances, or creation of a screenplay, short film, or composition.

## DIVISION OF LANGUAGES AND LITERATURE

Literature; Foreign Languages, Cultures, and Literatures; Written Arts

In the Division of Languages and Literature, the written arts are in constant conversation with literary studies. Comparative studies of literature, other arts, and theories of literature are a regular part of course offerings. Majors are encouraged to study a language other than English and to consider literary texts across disciplines. Languages include Arabic, Chinese, French, German, Greek, Hebrew, Italian, Japanese, Latin, Russian, Sanskrit, and Spanish.

Bard abounds with world-class fiction writers, literary critics, scholars, and poets; the division offers the Written Arts Program, led by writers such as Neil Gaiman, Robert Kelly, Ann Lauterbach, Francine Prose, and Luc Sante. Students in the program can take workshops and tutorials in fiction, poetry, or nonfiction. Senior Projects may take the form of a novel, poem sequence, play, short stories, or translations.

## DIVISION OF SCIENCE, MATHEMATICS, AND COMPUTING

Biology, Chemistry and Biochemistry, Computer Science, Mathematics, Physics, Psychology

A curriculum that is both progressive and classical leads to an understanding of the concepts, methods, and contexts of the scientific, mathematical, and computational disciplines studied. Introductory courses address the history of science and other science-related topics for majors and nonmajors alike. Courses in interdisciplinary fields, such as mind, brain, and behavior; environmental and urban studies; and science, technology, and society are offered through Interdivisional Programs and Concentrations. Faculty and students assist and learn from one another: psychologist Kristin Lane, for example, received a multiyear National Institutes of Health grant to research, with undergraduate collaboration, gender stereotyping in science.

Students learn by posing and solving problems and acquire knowledge in a field, as well as habits of critical and creative thinking that are necessary for all scientific activity. Exciting research possibilities include numerous opportunities on campus, such as the Bard Summer Research Institute and the Bard College Field Station, and at affiliated institutions, such as Rockefeller University laboratories in New York City. Senior Projects often consist of original experimental or theoretical research.

## DIVISION OF SOCIAL STUDIES

Anthropology, Economics, Economics and Finance, Historical Studies, Philosophy, Political Studies, Religion, Sociology

The Division of Social Studies is the locus for many interdivisional programs, from human rights to Asian studies, as well as the interdisciplinary Big Ideas courses.

Students are advised to take courses from a range of fields to develop a comprehensive perspective on humanity in contemporary and historical contexts and to focus on the diversity of human cultures and civilizations, values, and beliefs. Although the main emphasis in the division is on a liberal arts curriculum, students are encouraged to design courses of study to satisfy personal curiosity and interests. Faculty in the division include British history and literature professor Richard Aldous and foreign affairs and humanities professor Mark Danner.

Preparation for the Senior Project consists of seminars, conferences with advisers, tutorials, fieldwork, and independent research. Most are original research, but a Senior Project might consist of critical reviews of literature, close textual analysis, a series of related essays, or a translation.

## INTERDIVISIONAL PROGRAMS AND CONCENTRATIONS

At Bard, areas of study are interdisciplinary, drawing on the resources of the four academic divisions. In interdivisional American studies, for example, the faculty includes jazz musician Thurman Barker, historian Myra Young Armstead, environmentalist and writer Susan Fox Rogers, and archaeologist Christopher Lindner. Prominent novelist Nuruddin Farah is on the human rights faculty. Biology professor Felicia Keesing teaches in the Global and International Studies Program. The human rights major, the first such stand-alone major in the country, includes faculty in medieval studies, photography, and art history, among others. Students who choose a concentration also moderate into a primary program. The Senior Project combines the interdisciplinary nature of both areas of study.

### Many of the interdivisional fields are stand-alone majors:

American Studies; Asian Studies; Classical Studies; Environmental and Urban Studies; French Studies; German Studies; Global and International Studies; Human Rights; Italian Studies; Middle Eastern Studies; Russian and Eurasian Studies; Spanish Studies

### Other interdivisional endeavors are considered concentrations:

Africana Studies; Experimental Humanities; Gender and Sexuality Studies; Global Public Health; Irish and Celtic Studies; Jewish Studies; Latin American and Iberian Studies; Medieval Studies; Mind, Brain, and Behavior; Science, Technology, and Society; Theology; Victorian Studies

## BARD COLLEGE CONSERVATORY OF MUSIC

The mission of the Bard College Conservatory of Music is to provide the best possible preparation for a person dedicated to a life immersed in the creation and performance of music. The conservatory, in a thoroughly integrated program, confers two undergraduate degrees: a bachelor of music and a bachelor of arts in a field other than music. Students of composition and 15 instruments pursue all of their interests at one institution and share classes with undergraduates in the Bard Music Program. The conservatory's faculty members are renowned musicians whose artistry has been featured in the world's great concert halls. They include pianists Peter Serkin and Jeremy Denk (a MacArthur Fellowship awardee), violinists Ani Kavafian and Weigang Li, clarinetist David Krakauer, percussionists Sō Percussion, and composition mentors Joan Tower and George Tsontakis. The incoming dean of the conservatory is the world-renowned composer and conductor Tan Dun.

Students at the conservatory live and attend most classes with non-conservatory students. The requirements for the bachelor of arts degree are the same as for all Bard undergraduates. The conservatory offers unparalleled musical opportunities. Concerto competition winners perform with the American Symphony Orchestra, Conservatory Orchestra, or The Orchestra Now. Conservatory students and faculty have performed together in professional engagements throughout the United States and abroad—including tours of China, Central and Eastern Europe, and Cuba.



Theater and Performance Program's *Requiem for Anna Politkovskaya*. Photo by Chris Kayden  
Left: Students in the Bard Summer Research Institute. Photos by Pete Mauney '93 MFA '00

# DUAL-DEGREE AND GRADUATE PROGRAMS

Several programs enable students to combine undergraduate and graduate degrees. After three years, qualified students may enroll in the **Levy Economics Institute Master of Science in Economic Theory and Policy** or the **Bard Center for Environmental Policy** and receive a BA and an MS degree in five years. Bard's **Master of Arts in Teaching Program** offers a one-year MAT degree and New York State teaching certification in the fifth year, and the Levy Economics Institute supports a one-year MA program in the fifth year. Additional 3+2 programs include partnerships with the engineering schools at Columbia University and Dartmouth College and degree programs in forestry and environmental management at Duke University.

Other Bard graduate programs include:

**Bard Center for Environmental Policy** MEd degree in environmental education, and MS in environmental policy or climate science and policy.

**Bard College Conservatory of Music** MMus degrees in vocal performance through the Graduate Vocal Arts Program, and in conducting through the Graduate Conducting Program.

**Bard Graduate Center** MA, MPhil, and PhD degree programs in the study of the material world.

**Bard MBA in Sustainability** Offers an MBA degree that focuses on the business case for sustainability.

**Center for Curatorial Studies (CCS Bard) and Hessel Museum of Art** MA degree with practical training in a museum setting.

**International Center of Photography–Bard Program in Advanced Photographic Studies** MFA degree in photography, awarded in collaboration with the Milton Avery Graduate School of the Arts.

**Levy Economics Institute Graduate Programs in Economic Theory and Policy** MS and MA degrees focusing on one of five research areas in which the Levy Institute specializes.

**Longy School of Music of Bard College** MMus degree programs in composition, vocal and operatic performance, various instruments, jazz and contemporary music, and historical performance. In Los Angeles, MAT degree in music in conjunction with the LA Phil.

**Master of Arts in Teaching Program** MAT and credentialing (California single subject) in English language arts or social sciences.

**Milton Avery Graduate School of the Arts** MFA degree in film/video, music/sound, painting, photography, sculpture, or writing.

**The Orchestra Now (TÖN)** A unique training orchestra and MMus degree program in curatorial, critical, and performance studies.

# BEYOND THE CLASSROOM

**Chinua Achebe Center** Visiting writers, artists, and scholars take part in readings and discussions. The Achebe Center honors the late Nigerian writer Chinua Achebe, at Bard from 1990 to 2009.

**Archaeology Field School** Students learn excavating techniques and laboratory analysis through digs on campus and regionally.

**Hannah Arendt Center for Politics and Humanities** Students interact with scholars who consider current issues with the incisiveness that Arendt, at Bard in the 1950s, brought to politics and philosophy.

**John Ashbery Poetry Series** Named for Bard's late Charles P. Stevenson Jr. Professor Emeritus of Languages and Literature, the series brings leading contemporary poets to campus.

**Bard College Field Station and Hudsonia Ltd.** Bard students, faculty, and members of Hudsonia, a nonprofit institute for environmental exploration and education, conduct research on natural habitats.

**Bard Fiction Prize** Awarded to a promising young writer each year, the Bard Fiction Prize brings the recipient to Bard as writer in residence, to meet with students and give public readings.

**John Cage Trust** Bard is home to the trust, which maintains archives and collections of visual, musical, and other works by composer, philosopher, poet, and artist John Cage (1912–92).

**Cary Institute of Ecosystem Studies** Collaborative research opportunities constitute Bard's association with the Cary Institute, a premier research institution that focuses on applying ecosystem analysis to policy change.

**Center for the Study of the Drone** This interdisciplinary research, education, and arts community—founded by Arthur Holland Michel '13, Dan Gettinger '13, and Bard faculty—informs the debate on drones.

**Distinguished Scientist Lecture Series** This series offers an opportunity for firsthand contact with those shaping modern science, letting students observe how they think and work.

**Levy Economics Institute of Bard College** A nonprofit, public policy research organization, the Levy Institute hosts visiting scholars and sponsors an annual economics conference, which students attend.

**Rift Valley Institute (RVI)** A nonprofit research and training organization with offices in Kenya and at Bard, RVI works with communities and institutions in Eastern Africa.

**Woods Hole** Students from select colleges, including Bard, participate in the Semester in Environmental Science at the Ecosystems Center of the distinguished Marine Biological Laboratory in Woods Hole, Massachusetts.



# Bard

Bard College Office of Admission  
Annandale-on-Hudson  
New York

[bard.edu/admission](http://bard.edu/admission)  
[admission@bard.edu](mailto:admission@bard.edu)  
845-758-7472

©2019 Bard College  
Biology Program research. Cover: Citizen Science.  
Photos by Pete Mauney '93 MFA '00