

Bard

GUIDE FOR INCOMING

GRADUATE STUDENTS 24-25

AT BARD COLLEGE'S ANNANDALE-
ON-HUDSON CAMPUS

01/22/2024

GRADUATE PROGRAMS AT BARD'S ANNANDALE-ON-HUDSON CAMPUS

This guide is intended for graduate students enrolled in the following Bard Annandale graduate programs:

- Advanced Performance Studies
- Center for Curatorial Studies
- Center for Environmental Policy
- Center for Human Rights and the Arts
- Chinese Music and Culture Program
- Collaborative Piano Fellowship
- Graduate Conducting Program
- Instrumental Arts Program
- Levy Economics Institute
- Master of Arts in Teaching
- Master of Fine Arts
- The Orchestra Now
- Vocal Arts Program

Note:

If you would like to suggest additions or changes to this guide, please submit comments on this [anonymous form](#). This guide is updated annually.

Table of Contents

1 Bard at Annandale-on-Hudson

2 Packing

3 Transportation

4 Housing

5 Getting Set Up

6 Food

7 Health, Wellness, & Counseling

8 Campus Offices & Resources

9 On-Campus Activities

10 Off-Campus Activities

12 I Wish I Had Known...

13 Bard Graduate Student Bucket List

Bard At Annandale-on Hudson

Bard College's Annandale-on-Hudson campus sits on almost 1,000 acres of land alongside the Hudson River about 100 miles north of New York City. Bard's campus is on the unceded lands of the Munsee and Muhheaconnock people. Read the College's land acknowledgement [here](#). Bard College also acknowledges that exploitation of enslaved people was at the foundation of the economic development of New York and the Hudson Valley, including the land now composing the Bard College campus. Read the College's slavery acknowledgement [here](#).

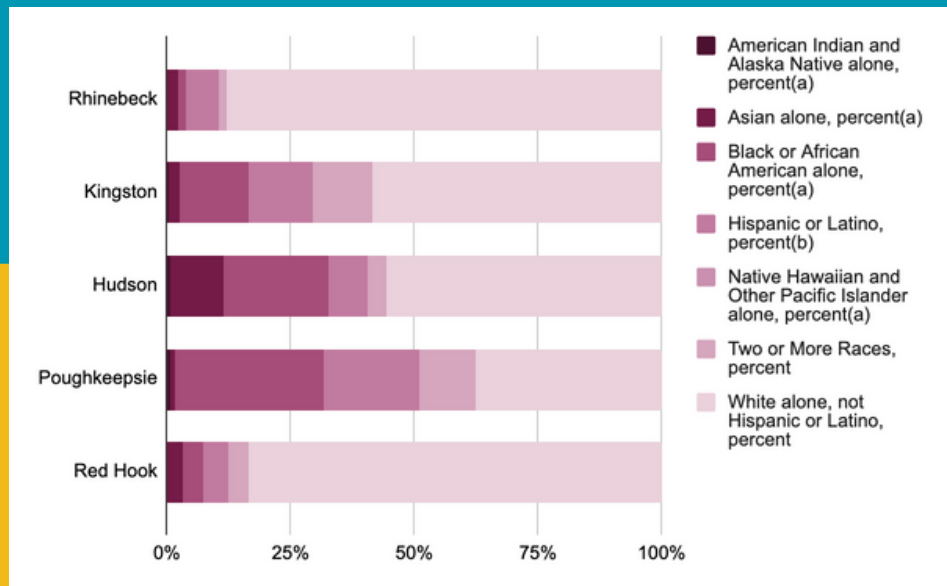
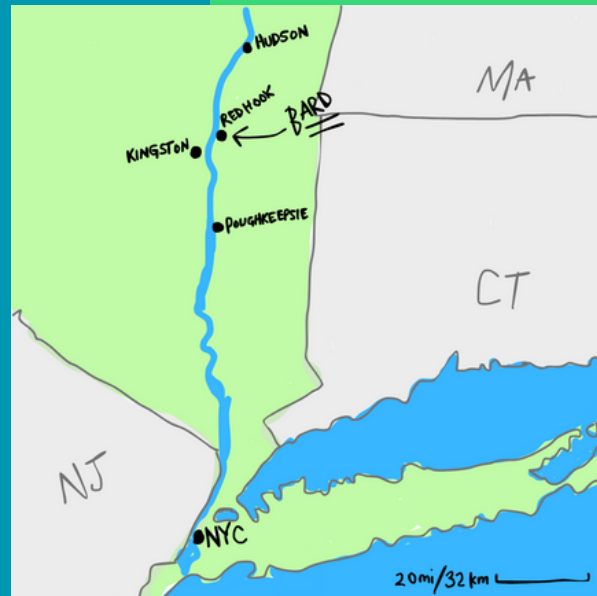


View of the Hudson River from campus. Photo by Subash Pandey CEP '23.

Check out campus:

[VIRTUAL CAMPUS TOUR](#)
[ACCESSIBILITY MAP](#)

Bard is in Red Hook, a rural town of about 10,000 people in Dutchess County. The town of Red Hook contains two village centers, the villages of Red Hook and Tivoli, which are connected to campus by a shuttle route. Nearby urban areas include Kingston (11 miles west), Hudson (18 miles north), Poughkeepsie (25 miles south), and, of course, New York City (100 miles south).



Red Hook is a predominantly white town with residents spanning the political spectrum. Bard campus tends to be more diverse in terms of race and gender expression than the surrounding town. Above are racial demographic data for some of the towns and cities near Bard (census data [here](#)).

Packing

Are we missing an important packing item? Share it with us on this [anonymous Google form](#).

Travel Documents

If you are an international student, communicate with the [Office of International Student and Scholar Services](#) (OISSS) to make sure you have the up-to-date documents you need for your travel to Bard and any time you travel out of the country during your time at Bard. Set up your Bard email early and check it regularly!

Technology

Check with your program about the technology and software you'll need (e.g.; Do you need a laptop or a tablet that can support specific software?). Refer to your program for any course material requirements.

Seasonal clothes

The weather varies dramatically with the seasons at Bard. In winter (December - March), temperatures can drop well below freezing, and snow storms are common. In the late spring, summer, and early fall (May - September), temperatures can get up to mid-90s Fahrenheit (35°C).



Lightweight or short sleeve clothes for hot weather.



A raincoat and/or umbrella for rainy walks to class.



A warm winter coat, warm hat, and warm gloves, scarf, snow boots, warm socks.

Transportation

Bard graduate students agree that it is easiest to get around the Hudson Valley with a car. However, with careful planning, many graduate students manage without one. Below is information about getting to campus and other places you need to go around Bard without a car.

From major airports

Bard Transportation has put together [this guide](#) for travel to and from major airports near campus (Albany, JFK, LaGuardia, Newark).

From NYC

1. Take [Metro North](#) from Grand Central Station to Poughkeepsie Station, then take the [Dutchess County Loop C](#) bus (Mon-Sat ONLY; no Sunday service) to Bard campus (\$1.75 or free with Bard ID). Poughkeepsie Station is 25 miles/40 minutes by car from Bard campus. Note for students living in Kingston: there is also a bus service from Poughkeepsie Station to Kingston.
2. Take [Amtrak](#)* from Penn Station (Moynihan Train Hall) to Rhinecliff Station (fares vary), then take a taxi or rideshare from Rhinecliff Station to Bard campus (9 miles/15 minutes).

***Accessibility: [Rhinecliff Station](#) is undergoing renovations to meet ADA compliance. Currently, [passengers must use step stools](#) to board the train from the platform.**



Campus Connect (FREE)

The Campus Connect shuttle can bring you from point to point on the Bard campus, Monday through Friday. See the Campus Connect shuttle [here](#).

Bard-Tivoli-Red Hook Shuttle (FREE)

Bard runs a shuttle service between campus and the villages of Tivoli and Red Hook daily from 7:50 a.m.-12 a.m. (hours vary during school breaks). The shuttle mostly operates on an hourly schedule, but be aware of hour-long breaks in the shuttle schedule to avoid getting stranded. The shuttle stops at Hannaford supermarket for 10-15 minutes during its afternoon rounds. See the [Bard Transportation website](#) for the most up-to-date shuttle schedule.

How to read the shuttle schedule:

Tips from former grad students:

- Use the shuttle to get to Red Hook for movies, restaurants, the public library, and restaurants!
- Shuttle stops at Hannaford are quick, so plan for a 10-minute shop or to stay for an hour. Watch out for breaks in the shuttle schedule!
- Take your bike along using the shuttle's front bike racks!

Check out the student-made [Bard Transport shuttle app](#)!

Dutchess County Loop C bus (FREE with Bard ID, otherwise \$1.75)

The Dutchess County Loop C bus runs between Tivoli and Poughkeepsie on Mondays through Saturdays. The bus is free for students with a Bard ID; otherwise, the fare is \$1.75. [Read the schedule](#) carefully if you are planning to travel from campus since the bus does not always stop at Bard on its way between Tivoli and Red Hook.

How to read the Loop C schedule:

MONDAY-SATURDAY LUNES-SABADO

NORTHBOUND: Poughkeepsie to Tivoli / HACIA EL NORTE: Poughkeepsie a Tivoli

SOUTHBOUND: Tivoli to Poughkeepsie / HACIA EL SUR: Tivoli a Poughkeepsie

Weekdays only (indicated by a red box around the 'W' column header)

No Sunday service (indicated by a red circle around the 'MONDAY-SATURDAY' header)

Know which direction you're going (indicated by a red arrow pointing to the 'NORTHBOUND' and 'SOUTHBOUND' headers)

Bus will only stop by request (indicated by a red arrow pointing to the 'Demand service only stops' note at the bottom of the schedule)

Bus leaves Bard toward Poughkeepsie at 6:52am, 7:22, 9:53, 11:37, 3:37pm, 6:42, 7:07, 10:07. (indicated by a red arrow pointing to the 6:52am departure time)

Shaded trips operate Monday-Friday only. They DO NOT operate on Saturday.

Only key points along the route are listed. Read the timetable from left to right.

Dutchess County runs other bus routes as well; [see those here](#), and download the DoubleMap app to see where buses are in real-time.

Tips from former graduate students:

- The Loop C can be really convenient and goes further from campus than the shuttle. Get to know the schedule!
- The Loop C can run early or late. Give yourself 30 mins wiggle room and arrive early.
- You can take your bike on the bus using the front bike racks.
- There is no Loop C service on Sundays, so plan accordingly!
- Do not forget your student ID to get free service!

Getting to Kingston

On select Wednesdays and weekends, Bard runs a shuttle from campus to the mall in Kingston. See the schedule [here](#). There is a toll when driving across the bridge from Kingston into Rhinebeck/Red Hook.

Shuttle to train stations

Bard provides shuttles between campus and the train stations Rhinecliff and Poughkeepsie on Fridays through Sundays during the fall and spring academic semesters. See train station shuttle schedules [here](#).

Ride shares and taxis

Previous students recommend always having a backup option if you are trying to use a ride-share service in the Bard area. Rideshares such as Uber or Lyft may be available during the day but are often harder to find at night. Former students recommend having a list of taxi numbers (e.g. Red Hook Taxi, Rhinebeck Taxi) and scheduling taxi rides well in advance.

"The taxi scene in upstate goes really deep and they're all characters. Find a good one and stick with them if possible."

- Former graduate student



Bicycles

There is beautiful biking in the area around Bard. Graduate students offered these tips for enjoying biking while staying safe:

- Stay off Route 9G! It's too busy and has a narrow shoulder.
- Wear a helmet and bright colors to stay safe and visible.
- Avoid riding in the winter - the roads can get icy!
- Check out the bike path between campus and Tivoli!

Take the back roads between campus and the village centers instead. See a map [here](#).

Pedestrian travel

Campus can be a great place to go for a stroll, but former students note that sidewalks in the area can abruptly end and aren't often found alongside roads outside of campus and downtown areas. Here are their tips for safe pedestrian travel:

- Stay off 9G and take the back roads between campus and the villages.
- Always look both ways before crossing any street. Cars sometimes speed on Annandale Road (the main road on campus). Consider removing your headphones for increased awareness of cars.
- Do not assume cars will stop for you, even when they should.
- Make sure you have a warm coat for the winter!



The back roads from Tivoli to Bard to Red Hook are quieter and safer than the major roadways (Rt 9G, Rt 9). Travel through the woods in Tivoli Bays, take the pedestrian paths on campus, and cross into residential neighborhoods to reach Red Hook. Cross carefully at intersections!

Housing

As a graduate student, you will most likely live off campus, and you will be responsible for finding your own housing. When looking for housing, you'll want to take a few factors into account:

Do you prefer to live in an urban or rural setting? Nearby urban areas include Kingston (11 miles west), Hudson (18 miles north), and Poughkeepsie (25 miles south).

Will you have your own car and a valid license? If not, you may want to find housing on the Bard shuttle route, which runs between the villages of Red Hook and Tivoli and connects to campus. You can also try to find housing on the Dutchess County Loop C bus route, which goes as far south as Poughkeepsie but has less frequent service. Bard graduate students emphasize that having a car significantly increases your housing options.

When do you need to move in? Previous graduate students reported beginning their housing search an average of 3-4 months in advance of their intended move-in date.

What is your budget? Previous graduate students have reported that it can be challenging to find affordable housing near Bard. In recent years, median rent has ranged from \$750 to \$825 per month depending on location. Rental rates vary and we cannot guarantee the data in this guide will be consistent with your experience. Make sure to budget for utilities, too, if they are not included in the rent.

Looking for people to live with? Reach out and ask if your Bard graduate program can connect you with other incoming students!



Search tools for housing

- Zillow
- Craigslist
- Facebook (e.g. [Bard Off-Campus Student Housing Forum](#), [Bard Students](#), [Kingston NY Housing: Real Estate & Rentals](#), Facebook Marketplace)
- Local realtors (e.g. Mondello Real Estate, Baright Realty, Blue Lake House Properties)
- Trulia
- Bard grad forum emails
- Personal connections (ask your Bard graduate program to be put in touch with students moving out of their current apartments)

Watch out for scams! Always try to see a rental in person before signing a lease or sending money. If you don't live in the Bard area, see if your graduate program may be able to connect you with someone local to help you take a virtual tour of a rental via video call.



Know your rights as a tenant:

This [Residential Tenants' Rights Guide](#) by the Attorney General's office outlines your rights as a renter in New York State.

Municipal websites:

Your village, town, or city's website can be a good place to find information about municipal resources as you get set up or events happening near you. Here are the websites for some of the municipalities near Bard:

- [Village of Red Hook](#) (new resident welcome letter [here](#))
- [Village of Tivoli](#)
- [Town of Red Hook](#)
- [City of Kingston](#)
- [Town of Rhinebeck](#)
- [Village of Rhinebeck](#)
- [City of Poughkeepsie](#)
- [City of Hudson](#)

Getting Set Up

We asked former graduate students their tips for getting set up when you arrive at Bard.

Here are their recommendations:

Financial aid

If you received any financial aid assistance with your tuition for graduate school at Bard, make sure you have logged into your student account on Bard's self-service [SSB Portal](#) and confirmed your acceptance of the aid (grants, loans, scholarships) you would like to accept. You must confirm acceptance of any aid awarded in order for it to apply to your account. You also will need to fill out paperwork to receive student loans. Carefully read and follow through on all emails from Student Accounts (sao@bard.edu) to avoid late fees. The Financial Aid office can take up to 4 weeks to process forms.

Set up your Bard email

Your Bard email address is how your program and other offices on campus will get in touch with you. It also provides opportunities to connect with other graduate students (e.g. to find housing together) via the grad student listserv. Set up your email early and check it often! If you are an international student, setting up your email early is especially important so that the Office of International Student and Scholar Services ([OISSS](#)) can be in touch with you as you prepare to come to campus.

Furniture and home goods

Find used furniture and home goods at local thrift stores, [Bard FreeUse](#), Facebook groups (e.g. [Bard College Bartering Community](#)), Craigslist, yard sales/side of the road, or from graduating students. There are also many stores in Kingston, and for plastic-free home products, check out [The O Zone](#) in Red Hook.



Bank accounts

Some students recommended sticking with your existing bank account, while others said it was a good idea to set up an account in the Bard area. International students recommended opening a new account when they arrive at Bard to avoid fees associated with using an international card. There are two options right on the shuttle route in the village of Red Hook that previous graduate students have used: Key Bank and Mid-Hudson Valley Federal Credit Union. There are many more bank options in Kingston. ATMs will usually charge a fee to withdraw cash using a card from a different bank.



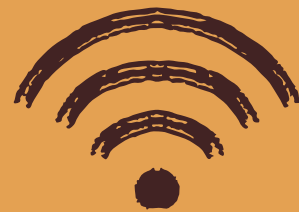
Phone Plans

Previous students reported using various service providers, including AT&T, Verizon, T-Mobile, Spectrum, Cricket Wireless, and Boost Mobile for their cell phone service while at Bard. On campus, you'll have access to Bard wifi.



Internet/cable

Your options for internet service providers will depend on where you live. Tip from a former student: Look into the government's [Affordable Connectivity Program](#) that may help cover your internet costs!



Electricity and Fuel

Your provider options will depend on your location. Pro tip for Central Hudson electricity customers: check and report your monthly meter reading to avoid estimated bills, which are often inaccurate. Call [Central Hudson](#) if you receive outrageous bills.

Trash, Recycling, and Waste

Services vary depending on location.

- [A Red Hook Resident's Guide to Materials Management](#) provides information about how to responsibly donate or dispose of all sorts of items!
- Red Hook and Tivoli residents can bring food scraps to the compost bins at the [Red Hook Recycling Center & Goods Exchange](#). The Recycling Center also accepts recycling (free) and trash (for a fee), and is open to all Red Hook residents.
- Trash and recycling information is available from the [Village of Red Hook](#), [Village of Tivoli](#), [City of Kingston](#).

Registering To Vote

If you are eligible to vote in the U.S. and want to register to vote for the first time or change your registration to your new address, the Center for Civic Engagement (CCE) has put together all the information you need [here!](#) This resource also includes information about voting by mail and [voting FAQs](#).

Finding a Barber Shop or Hair Salon

Here are recommendations from the Bard community for hair salons and barber shops who know how to take care of Black hair, including braiding:

- Johnah at [Stella Bella Salon](#) (Kingston)
- [Fatou's](#) (Poughkeepsie)
- [Hair Elation](#) (Poughkeepsie)
- [Mamyfa Hairbraiding](#) (Poughkeepsie)
- [Braids by Akinyi](#) (Poughkeepsie)
- Alonzo Barber Shop (Kingston)
- Don Sergio Barber Studio (Kingston)
- Perry's House of Style (Kingston)
- Adams Barber Shop (Poughkeepsie)
- Studio Kuts (Poughkeepsie)
- M&J's Hair Studio (Hudson)



Additional Resources

- Bard's SCALE Project has produced "[Being Not-Rich at Bard](#)," a guide that may help you as you get set up in the Bard area and learn about on- and off-campus resources.

Want to contribute recommendations to this guide? Use this [anonymous Google form](#).

Food

Many former graduate students say that they mostly ate food from off-campus while at Bard. However, there are multiple options for on-campus dining, including a halal restaurant, the campus cafe, a food pantry, and the main dining hall. This section also includes restaurant recommendations from former graduate students and their tips for grocery shopping in the area.

On Campus

- [Kline Dining Hall](#)
- [Down the Road](#) (DTR) Café
- [Halal Bros.](#) at Manor House (halal)
- Food pantry at Stevenson Athletic Center - keep an eye out for an emailed form to schedule weekly pickups!
- [Taste Budd's](#) delivery
- Vending machines

Restaurants:

Check out this [list of restaurants](#) in the area*, or explore on your own! Here are some favorites from previous graduate students:

- [Lucoli Pizza](#) (Red Hook)
- [Red Hook Curry House](#) (Red Hook)
- [Aroi](#) (Rhinebeck)
- [Cinnamon](#) (Rhinebeck)
- [TopTaste Restaurant](#) (Kingston)
- [Broadway Pizza](#) (Tivoli)
- [Abas Falafel](#) (Rhinebeck)
- Go to Kingston - there are so many good restaurants there!

*Previous students noted that restaurants around Bard often close around 8-9pm.

Groceries

Former graduate students shared recommendations for grocery shopping within a budget (students reported spending \$50 - \$150 per week on food), finding good deals, and locating the ingredients you need. Here are their tips and recommendations for grocery shopping near Bard:

- Supermarkets
 - [Hannaford](#) (Red Hook, Kingston, Livingston)
 - [Tops](#) - "more expensive than Hannaford" (Rhinebeck)
 - [Aldi](#) - "best bang for your buck" (Kingston, Hudson)
 - [Adams Fairacre Farms Grocery](#) - 20% off on Wednesdays after 5pm! (Kingston)
 - [ShopRite](#) (Kingston, Poughkeepsie, Hudson)
- Farm stands & farmers markets
 - [Bard Farm stand](#) (Thursdays on campus)
 - [Montgomery Place Orchard farm stand](#) (1.5 miles from campus on Route 9G) - discount produce in the back corner!
 - [Migliorelli farm stands](#) (Walking distance from UBS shuttle stop on South Broadway in Red Hook, River Rd in Rhinebeck)
 - [Greig Farm](#) (3 miles from campus on Pitcher Ln in Red Hook, accessible by bike) - seasonal pick-your-own produce!
 - & many more!
- Specialty food stores
 - [Red Hook Natural Foods](#) (Red Hook)
 - Mundo Latino (by the CVS in Red Hook)
 - [Mi Pequeño Oaxaca](#) (Rhinebeck)
 - Krishna Groceries (South Rd in Poughkeepsie)
 - [El Mercadito](#) (Broadway in Kingston)
 - Asian markets in Albany and Western Massachusetts
 - More options in Kingston, Hudson, Albany, Poughkeepsie

More recommendations:

- Bring the spices you need from home!
- Team up with friends to meal prep lunches!

Health, Wellness, and Counseling

Bard provides health services and counseling to all students enrolled at the Annandale campus, including graduate students.

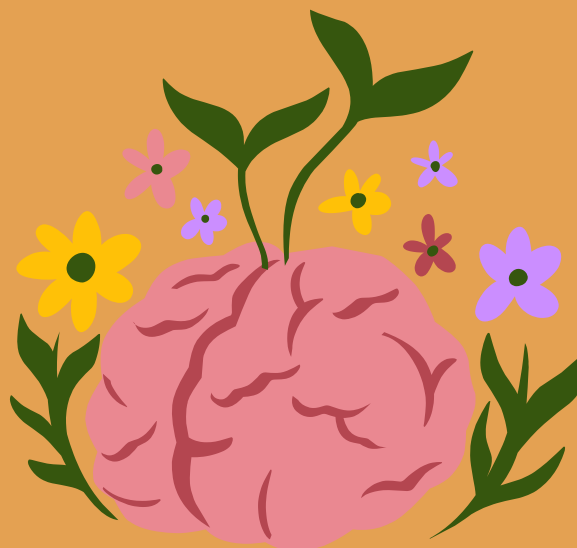
Health Services

All students enrolled in a program on campus are eligible for care at Health Services. Health Services does not bill your insurance – your on-campus healthcare costs are covered by the health services fee that accompanies tuition payments. Your insurance will only be charged for labs or other third party services.

Health Services provides full gender-affirming care. Health Services can also provide referrals to Planned Parenthood in Hudson. Health Services provides some reproductive services, including Nexplanon, and can provide referrals for prenatal care and for abortions.

Visits to Health Services are by appointment. To schedule an appointment with Health Services, visit the [online scheduling portal](#). Check the portal in the morning for the best appointment availability.

HEALTH SERVICES WEBSITE: <https://www.bard.edu/healthservices/>



Counseling Services

All students enrolled in a program on campus are eligible for care from Counseling Services. Counseling Services does not bill your insurance – costs are covered by the services fee that accompanies tuition payments.

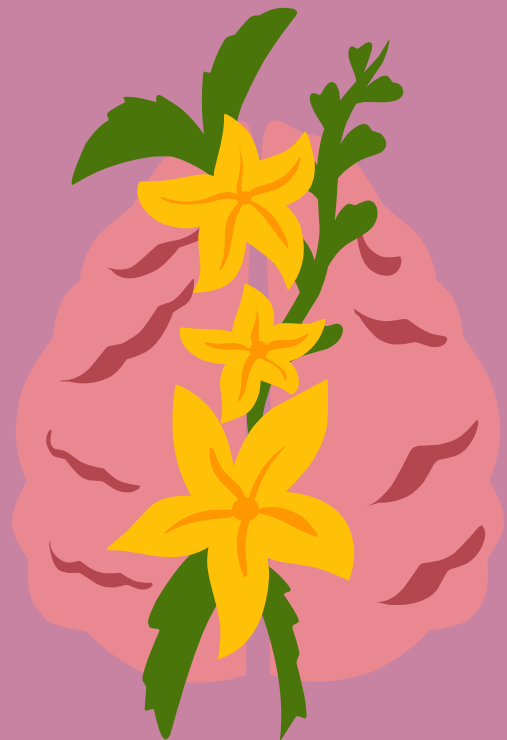
Counseling Services provides open hours clinics, counseling by appointment, and after-hours crisis coverage. Counseling Services also provides a BIPOC Therapist Referral List.

To see a counselor, you can [review the staff profiles](#), then [set up an appointment](#) or attend open clinic hours.

COUNSELING SERVICES WEBSITE: <https://www.bard.edu/counseling/>

Insurance

Bard offers opt-out student health insurance through CDPHP for students without adequate coverage in the Bard area. International students can obtain international student insurance that meets Bard's coverage requirements. Some former students noted that Bard student insurance can be expensive, and recommended keeping existing comprehensive insurance or looking into your eligibility for free insurance coverage through New York State Medicaid. You can find New York State health insurance options at [NY State of Health](#).



Mental Health and Crisis Support

EMERGENCY

Call **911**

Bard Counseling Services on-call

Call **845-758-7460** or **845-758-7777**
Campus Safety & Security will pick up. Ask to speak to the counseling services counselor on call.

You will be directed to an Area Coordinator who will ask about your immediate safety, your location, and your phone contact before connecting you with a counselor.

BRAVE 24/7 hotline (sexual assault)

Call **845-758-7777**
Campus Safety & Security will pick up. Ask to speak to a **BRAVE counselor**.

Dutchess County Helpline 24/7

Call or Text **845-485-9700**

New York State hotline 14/7

Call **844-863-9314**

Family of Woodstock Hotline 24/7

Call or Text **845-679-2485**

ULIFELINE 24/7

Call **800-273-TALK (8255)**

Crisis Text Line ([crisistextline.org](https://www.crisistextline.org))

Text HOME to **741741**

Trevor Lifeline (LGBTQ+) Hotline

Call **866-488-7386** or Text **678678**

Serious Illness or Injury

EMERGENCY

Call **911**

Bard EMS (Emergency Medical Services - on campus only)

Call **845-758-7777**

Bard Security (on campus)

Call **845-758-7460**

Emergency Room (Northern Dutchess Hospital)

Call **845-876-3001**

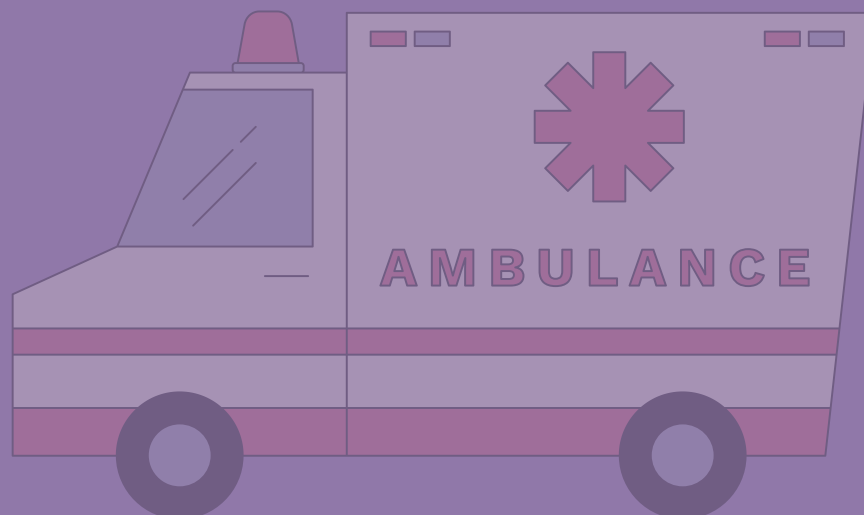
Urgent Care (Caremount Clinic, Rhinebeck)

Call **844-484-6564**

Additional health and wellness resources:

- [Health, Wellness, & Counseling Student Resource Guide](#)
- [Wellness at Bard](#)

[Bard College Trans Resource Guide](#)



Campus Offices and Resources

Below are some of the offices and resources you may interact with during your time as a graduate student at Bard. If you need to get in touch with a campus office or department, and you have not received a response by email, former Bard graduate students recommend following up by visiting campus offices in person. Former students also recommend making a “paper trail” of any in-person meetings or calls by sending an email to the person you met with summarizing what you discussed.

Find campus offices on Bard's [interactive campus map](#).

Athletics:

Stevenson Athletic Center

[**athletics@bard.edu**](mailto:athletics@bard.edu)

Website: [**https://bardathletics.com/**](https://bardathletics.com/)

Athletics at Bard include intramural, club, and varsity sports, as well as yoga and workout classes. All are equally open to graduate students and undergraduate students. Athletic facilities include a swimming pool, fitness center, squash courts, tennis courts, a basketball court, and outdoor soccer and baseball fields. See the facility hours and reservation links [here](#).

There are often opportunities to earn money by working game days; talk to someone in Athletics if you are interested or keep an eye on Handshake!

Career Development Office:

Bertelsmann Campus Center Room 201

cdo@bard.edu

845-758-7539

Website: <https://www.bard.edu/cdo/>

The Career Development Office offers support to students in the form of career resources, workshops, and individual meetings. While the CDO focuses on supporting undergraduate students, the office may be available to help graduate students as well.

Check out resources on the CDO website like Big Interview, Handshake, & more!

Center for Civic Engagement (CCE):

Ward Manor Gatehouse

civic@bard.edu

Website: <https://cce.bard.edu/>

CCE initiates programs, fosters sustained partnerships, and supports and connects student, faculty, and staff of Bard's local, national, and international networks as they work to make a difference in the civic life of their communities. CCE initiatives include Election@Bard, MLK Day of Engagement, and much more.

Dean of Inclusive Excellence:

Kappa House 110

The Dean of Inclusive Excellence acts as the primary contact for students, staff, and faculty in promoting an inclusive campus climate. The Dean of Inclusive Excellence is available to meet with students about concerns and facilitate mediation.

Disability Access Services:

Olin 106

disabilityservices@bard.edu

Website: <https://www.bard.edu/accessibility/students/>

Disability Access Services works with any student requesting disability accommodations, which can include accommodations for sensory disabilities, chronic illnesses, mobility or physical disabilities, and mental health disabilities, as well as temporary or provisional accommodations. Visit the Disability Access Services website or get in touch by email for more information about requesting accommodations.

Financial Aid:

Physical Plant 108

gradfinaid@bard.edu

Website: <https://www.bard.edu/financialaid/>

Financial Aid processes grants, loans, and scholarships. Carefully read all emails from Financial Aid and Student Accounts, be proactive, and act early. The Financial Aid office at Bard can take up to 4 weeks to process paperwork.

IT Helpdesk:

Old Henderson 313

helpdesk@bard.edu

845-758-7500

Website: <https://www.bard.edu/it/help-desk/>

The Bard IT Helpdesk can help you with computer and technology issues, such as setting up 2-factor authentication for your Bard email, recovering your password, understanding [how to print at Bard](#), and much more.

Bard IT is super helpful! Get in touch when you need assistance.

Office of International Student and Scholar Services (OISSS):

Kappa 107

oiss@bard.edu

Website: <https://www.bard.edu/oiss/>

OISSS provides individual assistance to international students, faculty, and their families through advice concerning federal immigration laws, tax and labor relations, and support related to personal, academic, professional, and cultural matters.

If you are an international student, set up your Bard email account early and check it regularly to keep in touch with OISSS about your visa status, necessary paperwork, and other concerns.

Title IX and Nondiscrimination:

Sottery Hall 107

titleix@bard.edu

Website: <https://www.bard.edu/nondiscrimination/>

The Office of Title IX and Nondiscrimination is dedicated to preventing, responding to, and remedying incidents of gender-based misconduct, bias, discrimination, and harassment throughout Bard and its affiliated programs. The Office ensures that fair and impartial processes are in place to address all complaints of discrimination and harassment. The [Office of Title IX and Nondiscrimination](https://www.bard.edu/nondiscrimination/) also provides education and programming to all members of the Bard community.

Students can go to the Office of Title IX and Nondiscrimination to raise concerns with or without making an official report. The office cannot act on anonymous complaints but all information you report is kept on file. The Office of Title IX and Nondiscrimination website also lists additional reporting options for gender-based misconduct and discrimination or harassment.

Registrar:

Ludlow, second floor

registrar@bard.edu

Website: <https://www.bard.edu/registrar/>

The Registrar is your contact for academic transcripts (both official and unofficial), proof of enrollment or graduation, and guidance on how to change your name at Bard.

Student tip: Carefully check records you receive from the Registrar to ensure they are correct.

Safety & Security:

Old Gym (next to Olin)

845-758-7460 (non-emergency)

EMERGENCY: 845-758-7777

Website: <https://www.bard.edu/security/>

Bard College provides round-the-clock, year-round safety and security coverage. The Safety and Security Department includes almost 20 officers, and its dispatching staff coordinates all security communications. All safety and security officers are registered New York State security personnel.

Student Resource Group:

bsrg@bard.edu

Website: <https://blogs.bard.edu/srg/>

The Bard Student Resource Group runs student-led initiatives that fill in gaps around campus.

Transportation: contact SRG to arrange for free transportation to medical appointments, emergency medical transportation, and night rides to get around campus and home safely

Sawkill Coffeehouse: late-night cafe

Gilson Place: an on-campus space for students of color

Stevenson Library:

Website: <https://www.bard.edu/library/>

The campus library houses books and study spaces. Access library databases online via the library website.

Office of Student Activities:

Bertelsmann Campus Center 218

studentactivities@bard.edu

845-758-7097

Website: <https://studentactivities.bard.edu/>

The Office of Student Activities (OSA) provides a meaningful experience and fosters impactful connections, while creating a home at the heart of Bard College.

OSA supports student clubs and hosts events on campus.



On-Campus Activities

Musical groups:

- **Chamber Singers** is open to all graduate students by audition. The group rehearses on Tuesday and Thursday evenings 5:30-7pm in Olin Auditorium. Contact James Bagwell at bagwell@bard.edu to express interest in auditioning.
- **Symphonic Chorus** is open to all graduate students, no audition required. The group rehearses on Tuesday evenings 7:30-9:30pm in Olin Auditorium.
- **Bard College Community Orchestra (BCCO)** is open to all by audition. The group rehearses Monday evenings in Olin Auditorium. Contact Josh Tyler, orchestra manager, at jtyler@bard.edu to express interest in auditioning.

Performances and events:

- Bard Daily Mail (delivered by email at 8:30am each day) lists upcoming events for the day and week ahead. You can also check out the Bard College [calendar of events](#).
- The Fisher Center is Bard's performing arts center, and hosts performances year round. Students are eligible for discounted tickets. See the Fisher Center's [calendar of events](#).

Religious services and programs:

- Chaplaincy programs and services include Christian services, Shabbat, Jummah prayers, and Buddhist meditation. Find more information on the [Chaplaincy website](#).

Clubs:

- Bard has over 150 student clubs and organizations. Check out the list [here](#) and get in touch with the organizers of clubs you are interested in!
- Student tip: join club email lists to stay up-to-date on club meeting times.

Sports:

Opportunities to participate in sports at Bard are just as open to graduate students as they are to undergraduate students. If you want to start a program that doesn't exist yet, contact Athletics!

- [Club sports](#): Rugby, ultimate frisbee
- [Intramurals](#): Get a team together for basketball and soccer leagues, new this year!
- [Varsity athletics](#): Baseball, basketball, cross country, lacrosse, soccer, squash, swimming, tennis, track & field, volleyball

Off-Campus Activities

Previous grad students have recommended these off-campus activities. Do you have a favorite to add to the list?--let us know [here](#).

Bars and social scenes:

- [Tubby's](#) (Kingston)
- [Snapper Magee's](#) (Kingston)
- [The Avalon Lounge](#) (Catskill)
- [Half Moon](#) (Hudson)
- [Traghaven](#) (Tivoli)
- [Keegan Ales](#) (Kingston)
- [Spotty Dog](#) (Hudson)
- [BackBar](#) (Hudson)
- [From the Ground Brewery](#) (Red Hook)
- [Santa Fe](#) (Tivoli, Kingston)
- [Hotel Tivoli](#) (Tivoli)

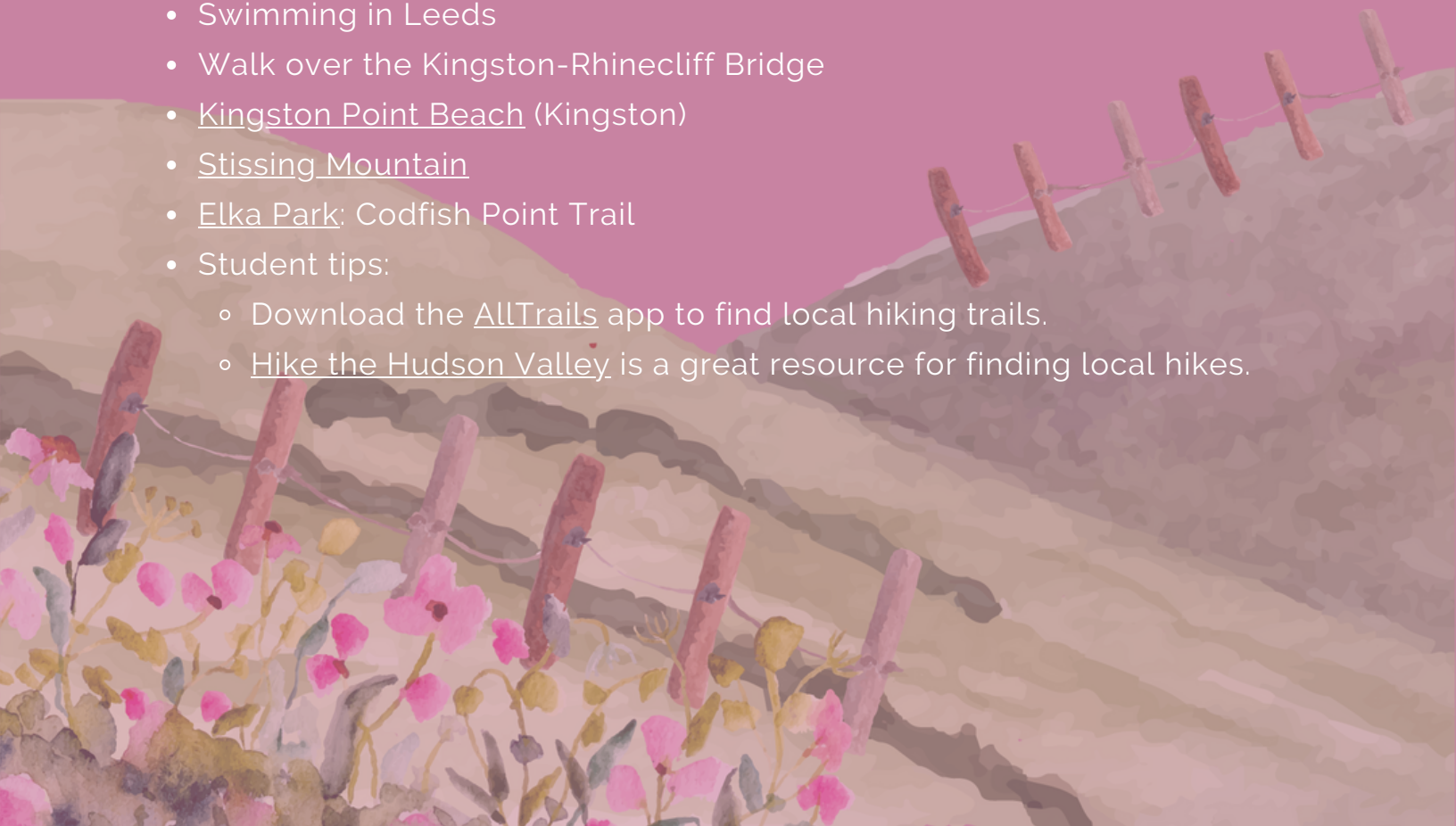
Arts & film:

- [Baba Yaga Gallery](#) (Hudson)
- [Upstate Films](#) (Rhinebeck & Saugerties)
- [Opus 40 sculpture park](#) (Saugerties)
- [Lyceum Cinemas](#) (Red Hook)



Outdoors

- [Montgomery Place](#) (Bard campus)
- [Tivoli Bays](#) (trails from campus)
- Cruger Island (trails from campus - but only at low tide!)
- [Esopus Meadows](#) (Ulster)
- [High Falls](#) (Hudson)
- [Ferncliff Forest](#) fire tower (Rhinebeck)
- [Burger Hill](#) (Rhinebeck) - with a stop at [The Matchbox Cafe!](#)
- [Overlook Mountain](#) (Woodstock)
- [Poet's Walk](#) (Red Hook)
- [Kaaterskill Falls](#)
- [Platte Clove Preserve](#) (Hunter)
- [Berkshire Mountains](#) (Western MA)
- [Lake Taghkanic State Park](#) (Ancram)
- Starr Park (Rhinebeck)
- Mansion at [Clermont State Historic Site](#)
- [Catskill Mountains](#)
- [Mills Norrie State Park](#) (Staatsburg)
- Swimming in Leeds
- Walk over the Kingston-Rhinecliff Bridge
- [Kingston Point Beach](#) (Kingston)
- [Stissing Mountain](#)
- [Elka Park](#): Codfish Point Trail
- Student tips:
 - Download the [AllTrails](#) app to find local hiking trails.
 - [Hike the Hudson Valley](#) is a great resource for finding local hikes.



Cities & Towns To Visit

- Rhinebeck
- Woodstock
- Hudson
- Poughkeepsie

Religious services:

The Bard Chaplaincy has put together a list of off-campus faith communities in Dutchess County. You may find the list on the [Chaplaincy website](#) or download the PDF [here](#). Note that this list does not include faith communities in neighboring counties such as Ulster County, where Kingston is located.

Employment:

Each graduate program has its own demands that will affect how many hours students can typically manage to work per week while staying on top of academic work. Check with your specific program about the number of hours recommended for employment during the academic year.



Bard Graduate Student Bucket List

We asked Bard graduate students what three things are “must do” activities while attending grad school at Bard. Here’s what they said:

Outdoor recreation:

- Visit the Ferncliff Forest fire tower
- Visit Montgomery Place and see the mansion
- Swim in Zabriskie's Waterfall on campus
- Hike Overlook Mountain on a clear fall or spring day
- Visit Tivoli Bays
- Go to the Kingston Rail Trail
- Walk down to the Hudson River
- Watch the sunset from the Blithewood lawn
- Go stargazing with the Physics faculty
- Walk across the Kingston-Rhinecliff bridge
- Go to Kaaterskill Falls
- Enjoy the Hudson River as much as possible
- Zabriskie's Waterfall is a popular spot on campus to cool off in the summer.

Food & shopping:

- Eat at Yum Yum Noodle Bar
- Shop for fresh veggies at the Bard Farm Stand
- Eat at Red Hook Curry House
- Visit Thrift2Fight in Tivoli

Self care:

- Join therapy



Arts, entertainment, & events:

- See a performance at the Fisher Center (student discounts offered)
- Go to Spring Fling
- Spend the summer at Bard: Spiegeltent, Surrealist Circus, etc.
- Attend the International Student Organization Showcase at the Fisher Center in the fall
- Visit the Hessel Museum

Travel:

- Take the train to NYC and sit on the side with a view of the Hudson River
- What's on your bucket list? Share your contributions using this [anonymous Google form](#).

